

# Fiber Relocate – UM Campus

## 1.0) Bid Purpose

Shelby County is issuing this bid in order to relocate existing fiber optic cable as part of a new construction project. Currently, the construction site has existing fiber optic cables that will need to be relocated to accommodate the building footprint.

## 2.0) Scope/Statement of Work

Shelby County desires to seek a single vendor to implement this fiber relocate. The cable work consists of relocating approximately 200 feet of fiber optic cables to the inside of the street ride away and sidewalks. There will be 4 – Quazite telecommunication box required and a 30' bore with remaining pathways to be trenched. All conduits must be duct sealed with trace wire. UM/County will be responsible for ordering line locates and landscape restoration upon completion.

Responding bidders are required to participate in an onsite walk through April 27<sup>th</sup> at 9a.m. Plan to meet in the parking lot at the corner of North Boundary Street and Valley Street in Montevallo.

## 3.0) General Requirements

Proposed fiber splices should consist of new fiber optics cable with the following minimum specifications:

- A.) OSP Single mode fibers - 48 strand
- B.) OSP Multimode fiber (2) 12 strand
- C.) Core/Cladding at 8-9/125 microns
- D.) Fusion splices will be required. Outdoor rated splice case and tray required.
- E.) Provide OTDR certification upon completion of the project.
- F.) In an effort to minimize service impact for the University the cutover will need to be done over a predetermined weekend in May.

All hardware ("equipment") must meet or exceed specifications provided here in. Vendors are required to clearly identify any deviations for the bid specifications. Quality, reliability and performance of equipment are essential to our applications. Qualified repair service, parts and technical support must be available.

## 4.0) Installation, Training and Support:

- A.) The solution is to be configured installed, tested and made operational no later than May 29<sup>th</sup> 2016.
- B.) Awarded company must provide system and services support (technical support desk, on-site technical visits).

## 5.0) Bid Submission:

The Bidder should submit bids with unit prices reflected on all components. Professional services,

## Fiber Relocate – UM Campus

hardware and other expenses should be listed separately. County reserves the right to purchase none, one or several of any items quoted based upon the bid proposal.

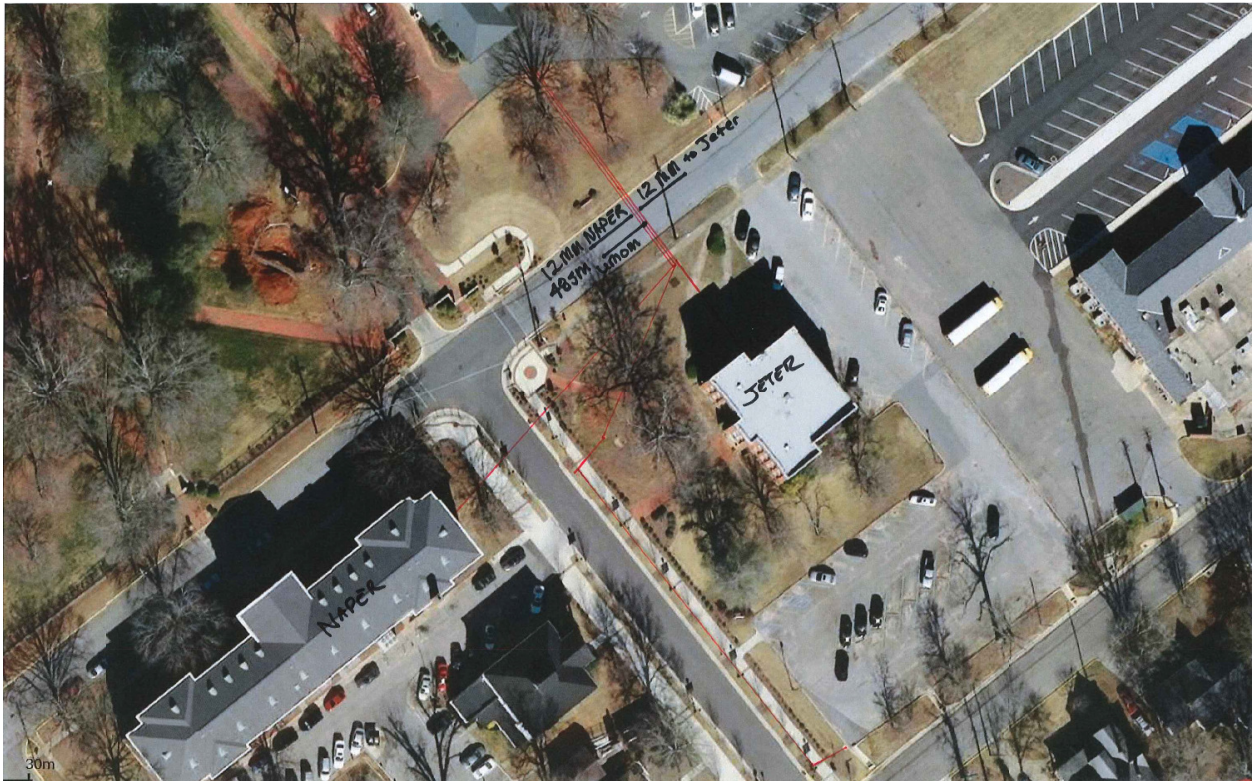
The Bidder must submit no less than (3) three references from current clients. The County reserves the right to use itself as a reference and to solicit references from clients other than those listed.

Please refer any questions regarding this fiber expansion project system to Jason Peterson with the University of Montevallo [petersonj@montevallo.edu](mailto:petersonj@montevallo.edu) or Jim Blair with Shelby County [jblair@shelbyal.com](mailto:jblair@shelbyal.com)

### 6.0)Evaluation Criteria:

Evaluation will be based on the County & UM's sole judgment of the quality and features of the services and hardware offered, references, support capabilities of the firm and price.

### 7.0)Maps:



## Fiber Relocate – UM Campus

